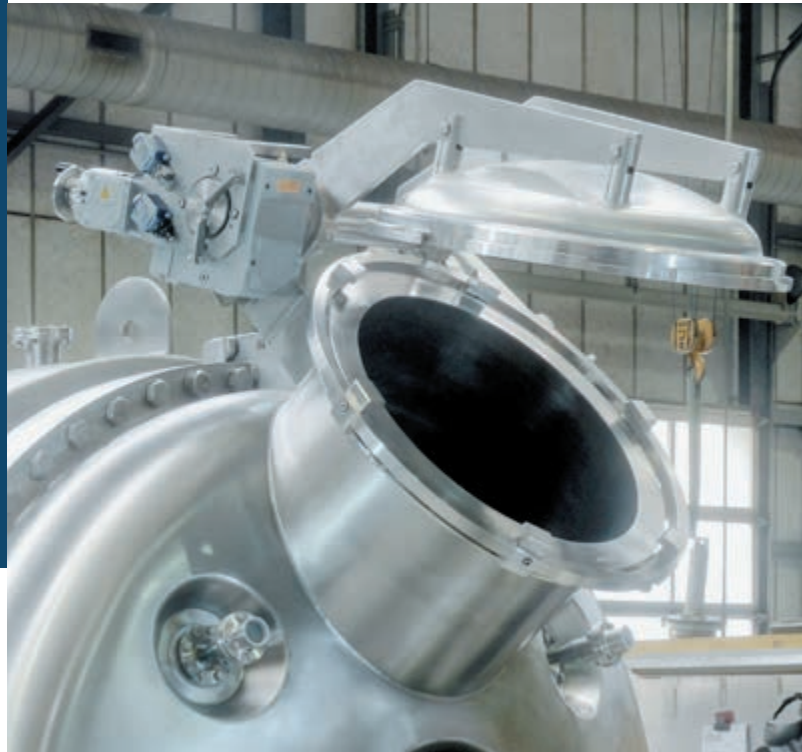


Automatic manway

The automatic fast-closing manway is a filling hatch for efficient processing. It is ideal for frequent opening and closing. The introduction of additives into the equipment by means of fixed piping is difficult due to heat and humidity. Automatic manways therefore offer process advantages and relieve the operator from heavy and time-consuming work. With KASAG Swiss AG, you are choosing technical perfection and securing your advantages on the market.



Function

Easy pushbutton actuation and lid position controlling, locking and safety-cross provide optimal operating safety. The freely programmable logic controller enables, customer-specific solutions.

Technical data

Nominal width	500 and 600 mm
Max. operating pressure	-1/3(6) bar
Max. operating temperature	150 °C
Opening angle	150°
Material	Standard commercial stainless steels
Operating safety	In accordance with accident prevention laws